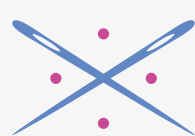




# QUILTING COMPETITION 2026

Competition entries are now open for the Scottish Quilting Competition 2026 with eight exciting categories to choose from, including a brand new theme.

Deadline for entries is 6 February 2026



The Scottish  
Quilting Show

SEC Glasgow • 5 - 7 March 2026

Over £5,500 worth of prizes to be won  
Enter now: [creativitycraftshow.co.uk/competitions](https://creativecommons.co.uk/competitions)



# THE QUILTING COMPETITION 2026



**There are 8 different categories to choose from within the Scottish Quilting Competition.**

Entry is open to anyone in the British Isles except where a restriction is contained within the class schedule.

You may enter more than one category, but we need your **completed entry forms by midnight on Friday 6 February 2026 at the latest.** If you have any queries about entering the competitions – email Jane Bolsover on [jane@janebcreatives.co.uk](mailto:jane@janebcreatives.co.uk) with your question.





# Competition Prizes

The minimum value of the prizes for each non-professional adult category are as follows:

- **Gold Award** £350.00 worth of products, plus rosette and certificate
- **Silver Award** £100.00 worth of products, plus rosette and certificate
- **Bronze Award** £50.00 worth of products, plus rosette and certificate

The “Under 16’s Quilter” category prize values are as follows:

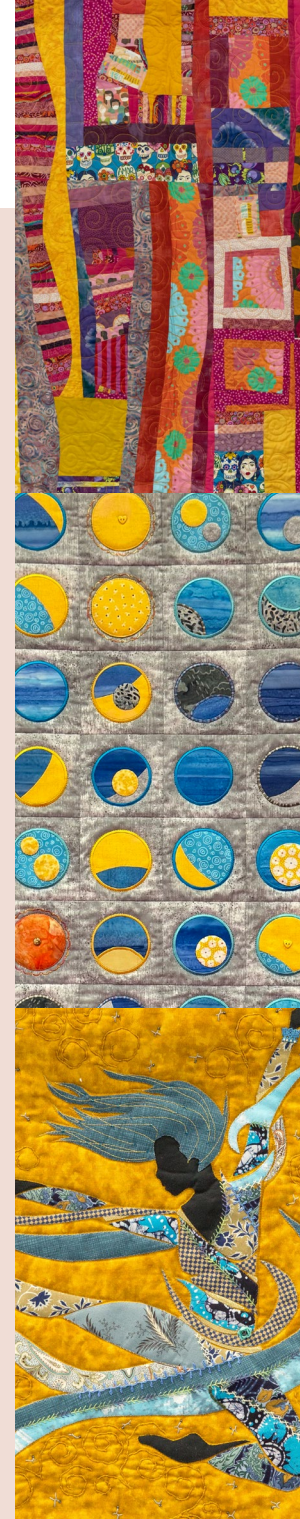
- **Gold Award** £150.00 worth of products, plus rosette and certificate
- **Silver Award** £75.00 worth of products, plus rosette and certificate
- **Bronze Award** £25.00 worth of products, plus rosette and certificate

**All prizes are as stated. No cash alternatives shall be offered.**

The prizes for each Professional Maker category are as follows:

- **Gold Award** £350.00 cash, plus rosette and certificate
- **Silver Award** £100.00 cash, plus rosette and certificate
- **Bronze Award** £50.00 cash, plus rosette and certificate

The judges may give “Highly Commended” awards for up to three additional quilts across each category, and these winners will receive a certificate.



## BEST IN SHOW

The “Best in Show” award is kindly sponsored by Janome, and the winner will receive a **MC8200QCP Special Edition** sewing machine (RRP: £2129.00), which features a longer sewing bed ideal for quilting.

Sponsored by

**JANOME**

# COMPETITION CATEGORIES 2026



## A: Traditional Quilts

Quilts made using traditional pattern or design. Either pieced together and quilted, appliquéd and quilted, wholecloth and quilted, or a combination of all these techniques – quilting by hand or machine. Created by a single non-professional maker only.

Sponsored by

Lewis & Irene



## B: Contemporary Quilts

Quilts based on the traditions of quilt making but are original in design. Makers may use non-traditional fabrics, fabric painting, printing, dyeing and embellishments. These quilts can be hand or machine pieced, or a combination of both. Created by a single non-professional maker only.

Sponsored by



## C: Modern Quilts

Quilts should be minimalist with a clean modern design but can be based on traditional designs with a modern twist. Quilts may include the presence of the following features: bold geometric colours; high contrast creating negative space; varying sized blocks, exaggerated scale, asymmetry and simple graphic quilting. Created by a single non-professional maker only.

Sponsored by



## D: Art Quilts

These quilts are designed as a piece of artwork and should have a strong visual impact on the viewer, communicating an idea, emotion or concept through the medium of stitch. It must be a totally original in design and created by a single non-professional maker only.

Sponsored by







## E: Group Quilts

An open category for quilts produced by two or more makers, using any technique.

**PLEASE NOTE:** Any quilt that has been long arm quilted by a second person other than yourself should be entered into this category.

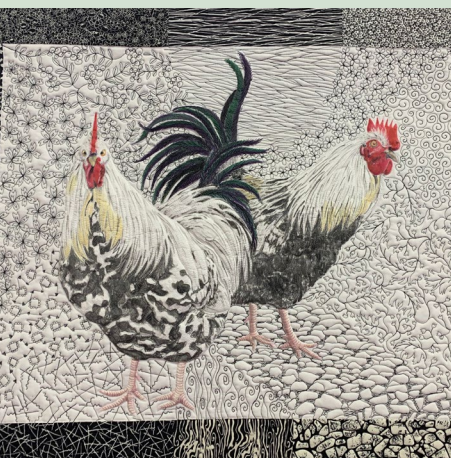
Sponsored by



## F: Themed Quilt – Pathways

Is it a winding trail to explore, a bold journey toward a goal, or even a hidden network branching out like veins or roots? The beauty of *Pathways* is that it can be whatever you imagine. We invite you to think beyond the obvious – step outside the box and share your own original, creative interpretation of *Pathways*. This category is open to single makers who are non-professional.

Sponsored by



## G: Professional Maker

An open category for professional makers who are teachers and judges in patchwork, quilting and textiles, plus any persons who have won any award in a major national or international competition. Quilts can be of any technique and size, restricted only by the Rules of Entry. Created by a single maker only.

Sponsored by



## H: Under 16's Quilter

An open category for young persons aged 10-16 years. Quilts can be of any technique and size, restricted only by the Rules of Entry. Created by a single maker only.

Sponsored by



Competitors **MUST** read the Rule of Entry carefully, ensuring that their quilt complies with the requirements of their chosen class.



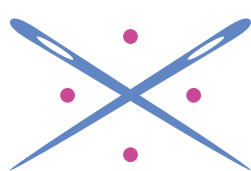
## HOW TO ENTER

Choose the category you'd like to enter. You may enter a piece into more than one category, except where a restriction is contained within the class schedule, but only one entry is allowed for each category.

- **IMPORTANT:** Read the **Rules of Entry** for full competition details on quilt construction, labelling, delivery and fees.
- Complete the online Entry Form – [www.creativecraftshow.co.uk/competitions](http://www.creativecraftshow.co.uk/competitions)
- Pay the appropriate entry fee separately (non-refundable).
- Get to work and stitch a beautiful quilt that could win you one of our fabulous prizes!
- Email one high-resolution image of your completed or planned quilt to: [competitions@ichf.co.uk](mailto:competitions@ichf.co.uk) (.jpg or .pdf files are preferable) by 6 February 2026. Please label the image file with your name and category.
- All finished quilt entries must be posted to ICHF Events by 20 February 2026 at the latest; hand delivery to SEC will be Tuesday 3 March 2026 (see Rules of Entry for more details).

If you have a question about entering or need guidance, please contact Jane Bolsover on [jane@janebcreatives.co.uk](mailto:jane@janebcreatives.co.uk)

**Closing date for entries: 6 February 2026**



The **Scottish**  
**Quilting** Show

Hall 4, SEC Glasgow: : 5 - 7 March 2026



# RULES OF ENTRY

## DEFINITION OF A QUILT

The structure of a quilt is traditionally three complete layers, but a minimum of two layers is acceptable. Stitch or other elements must hold these layers together.

## ENTRIES

1. These competitions are open to all quilters in the British Isles. Quilts entered in this competition should be single sided.
2. Only one piece may be entered per category, and competitors must complete an entry form for EACH ENTRY by the closing date. All entries must be the Bonafide work of the individual or group who has entered.
3. Entrants must acknowledge if their quilt design has been made from a book, magazine, workshop or kit. **Please state whether your quilt has been long arm quilted by someone else, if so, please ensure that it is entered into the "Group Category".**
4. **ALL ENTRIES must measure:**
  - No smaller than 20 x 20 inches in either direction
  - No larger than 60 x 80 inches overall**The sides of the work must be within the stated limits.** Please ensure accurate dimensions are provided on the entry form in the correct order ie. width first and height second.
5. A hanging sleeve of 4 inches must be attached to the back of the quilt, unless it features an integral hanging device. Failure to provide this will mean that the quilt cannot be displayed.
6. **The decision for the category entered is the responsibility of the maker.** Quilts cannot be swapped to another category after the entry form has been processed.
7. We reserve the right to NOT hang work that contains any sharp or dangerous materials, or which, the Organiser's feel is unsuitable in any way for display.
8. Please ensure each entry has a label on the back of the quilt to enable us to identify your quilt. Please cover the label on the back with a flap of fabric, to ensure anonymity during the judging process.
9. We endeavour to hang all pieces, which comply with the Rules of Entry, where we have received a completed entry form by the due date, but this cannot be guaranteed, and the Organisers reserve the right not to display any piece for whatever reason.
10. All competitors will receive acknowledgment of their entry, plus a competitor's badge, which gives free access to the show on all 3 days. Please go to the Organisers' office on arrival, to collect your badge.

## DATES AND FEES

1. **Entry forms must be received by Friday 6 February 2026.** Entries may not be accepted if they arrive after this date.
2. You must send a photograph, sketch or layout of your finished, or planned piece with the entry form to: [competitions@ichf.co.uk](mailto:competitions@ichf.co.uk), to help with identification of your entry.
3. Each entry form must also be accompanied by the correct registration fee of £15.00. **THERE WILL BE NO REFUNDS.** Please note, there is an additional £10.00 charge, should you require your quilt to be returned by courier.

## PACKAGING YOUR QUILT

1. Packaging the quilt is the maker's responsibility. For POSTAL quilts we advise rolling your quilt face out around a cardboard tube, and covering with bubble wrap and brown paper, for protection. For HAND delivery please use minimal packaging, which you will be asked to take away with you.
2. Attach a 'From' label to your parcel, to enable us to identify your entry, also stating the category that you are entering (A, B, C, D, E, F, G or H). Make sure your labels are clear as to whom the parcel is 'To' and 'From'. Please use BLOCK CAPITALS.

## DELIVERY OF YOUR QUILT

Please choose one of the following options to get your quilt to us:

### Option 1: POST OR COURIER

**Deadline for the delivery of all quilts to the following address is Friday 20 February 2026.**

#### Quilting Competition 2026

**ICHF Events, Dominic House, Seaton Road, Highcliffe, Dorset, BH23 5HW**

For delivery queries email: [suzannel@ichf.co.uk](mailto:suzannel@ichf.co.uk)

The cost of the postage will depend on the courier or service that you choose.

### Option 2: DELIVER BY HAND

**Delivery to this address is Tuesday 3 March 2026, between the hours of 11am and 3.30pm.**

**Judi O'May**

**SEC, Hall 4, Glasgow, G3 8YW**

Tel: 07821 693097

## JUDGING AND AWARD CEREMONY

1. Judging will take place on Wednesday 4 March 2026 on the set-up day of the show. There will be no access to the area on Wednesday, whilst the judging is taking place. The results will be available from Thursday morning and published on the ICHF website.
2. The judges' decision is final, and no correspondence will be entered into.
3. The prizes will be accepted as stated. There are no cash alternatives.
4. All winners will be announced at the show and prizes presented on The Textile Stage on Saturday afternoon 7 March 2026. If winners are not in attendance, the prizes will be dispatched to them. **We strongly recommend that you attend the Award Ceremony on Saturday 7 March.**

## SECURITY

While reasonable care will be taken with the security of all exhibits, the Organisers' will not be held responsible for any loss or damage to exhibits, equipment or personal effects.

## INSURANCE

Insurance is the responsibility of the quilter. We cannot insure quilts on your behalf.

## INTELLECTUAL PROPERTY RIGHTS

By entering competitions and allowing work to be shown at The Scottish Quilting Show, PLEASE BE AWARE that photographs or copies may be taken by any person or visitor and realise that your designs/work may be reproduced, but you will not hold ICHF or its employees' liable in any way should this occur.



## PHOTOGRAPHY

Please note the Organisers will be taking photographs of the competition entries at this event. These photographs may be used within magazines, newspapers, online and social media and to promote future events.

## REMOVAL OF EXHIBITS FROM SHOW

All exhibits must be removed at the stated time and NOT before. Collection can commence from 5pm – 6pm Saturday 7 March 2026. Please be aware of this rule when organising your travel plans. Competitors' badges must be worn as proof of ID to enable you to collect your quilt from the show. The Organisers' reserve the right to remove any exhibit not taken by 7pm on Saturday 7 March 2026.

**PLEASE NOTE:** If you have arranged for your quilt to be returned by post, **then you may not change your mind and collect it in person or nominate anyone else to do so after the show.**

## RETURN OF POSTAL QUILTS

We will aim to dispatch your quilt back to you within one calendar month from the show date.

